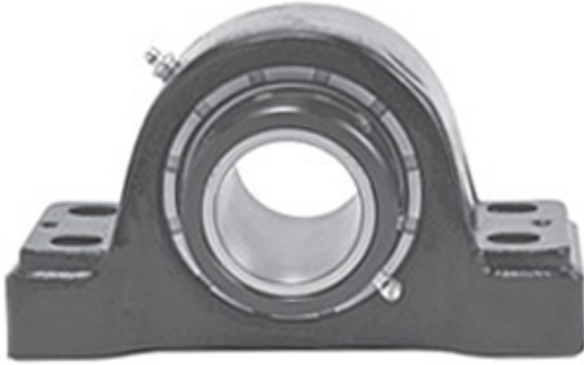




Shandong Shenjie Bearing Co., Ltd.

3.937 Inch | 100 Millimeter x 5.063 Inch | 128.59
Millimeter x 4.252 Inch | 108 Millimeter LINK
BELT PKB224M100FH Pillow Block Bearings



Bearing No. PKB224M100FH

PKB224M100FH Bearing 2D drawings and 3D CAD models

Category	Pillow Block Bearings
Inventory	0.0
Manufacturer Name	REXNORD
Minimum Buy Quantity	N/A
Weight	33.53
EAN	0662327479619
Product Group	M06288
Number of Mounting Holes	4
Mounting Method	Concentric Collar
Housing Style	4 Bolt Pillow Block
Rolling Element	Spherical Roller Bearing
Housing Material	Cast Steel
Expansion / Non-expansion	Non-expansion
Mounting Bolts	20 Millimeter
Relubricatable	Yes
Insert Part Number	B224M100HL
Seals	Floating Labyrinth
Housing Configuration	1 Piece Solid
Inch - Metric	Metric
Other Features	Double Row Single Collar Extended Inner Race With Set Screw
Long Description	4 Bolt Pillow Block; 100MM Bore; 108MM Base to Center Height; Concentric Collar Mount; Spherical



Shandong Shenjie Bearing Co., Ltd.

	Roller Bearing; Relubricatable; Cast Steel; Floating Labyrinth; Non- expansion
Category	Pillow Block
UNSPSC	31171511
Harmonized Tariff Code	8483.20.40.80
Noun	Bearing
Keyword String	Pillow Block
Manufacturer URL	http://www.rexnord.com
Manufacturer Item Number	PKB224M100FH
Manufacturer Internal Number	5847961
Weight / LBS	73.855
d	3.937 Inch 100 Millimeter
Nominal Bolt Center to Center	12.1 Inch 308.5 Millimeter
D	5.063 Inch 128.59 Millimeter
Bolt Spacing Minimum	0 Inch 0Millimeter
Actual Bolt Center to Center	12.5 Inch 317.5Millimeter
B	4.252 Inch 108 Millimeter
Bolt Spacing Maximum	0 Inch 0Millimeter